

The Ruger® 10/22 Bolt Installation Procedure

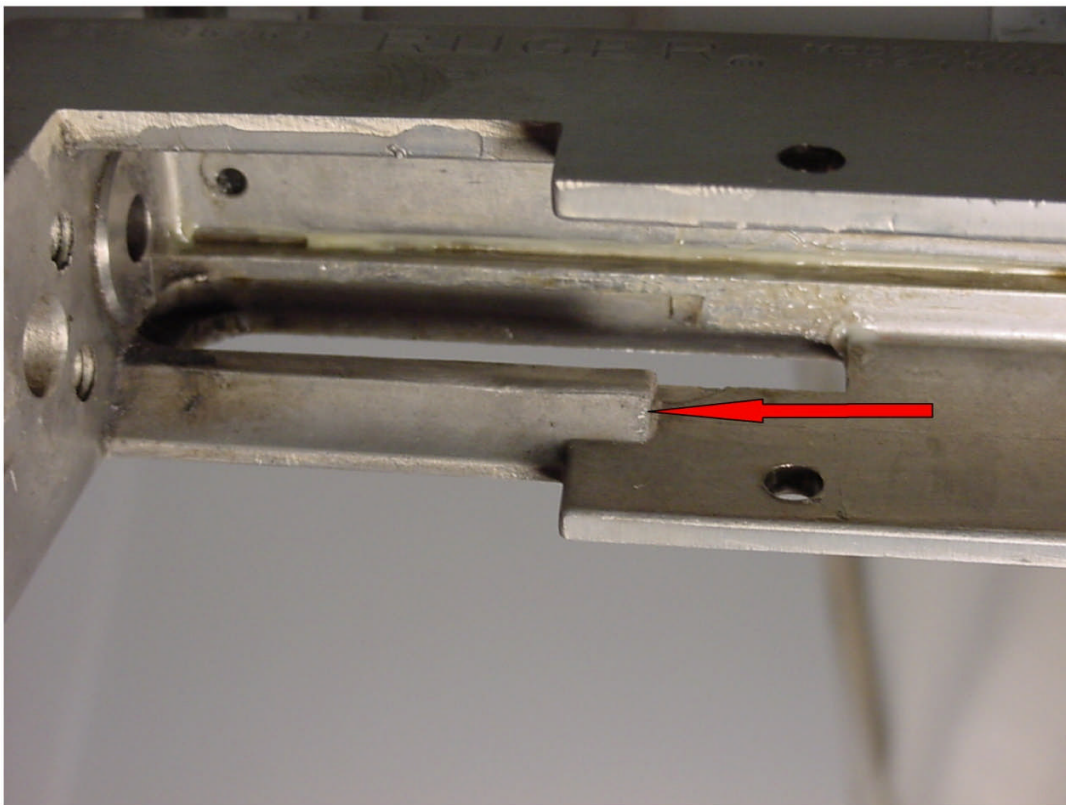
Problems, Modifications and Fixes

Problem: After re-inserting the bolt handle into the receiver, the nose (front) of the bolt will not drop down onto the bolt handle. This procedure can be viewed on Youtube™ at <http://www.youtube.com/user/PKGunsmithing>

Overview: The opening in the receiver may not be quite large enough for the bolt handle and bolt to drop down into place. There is a small ridge that prevents the bolt from being seated properly.

The Fix:

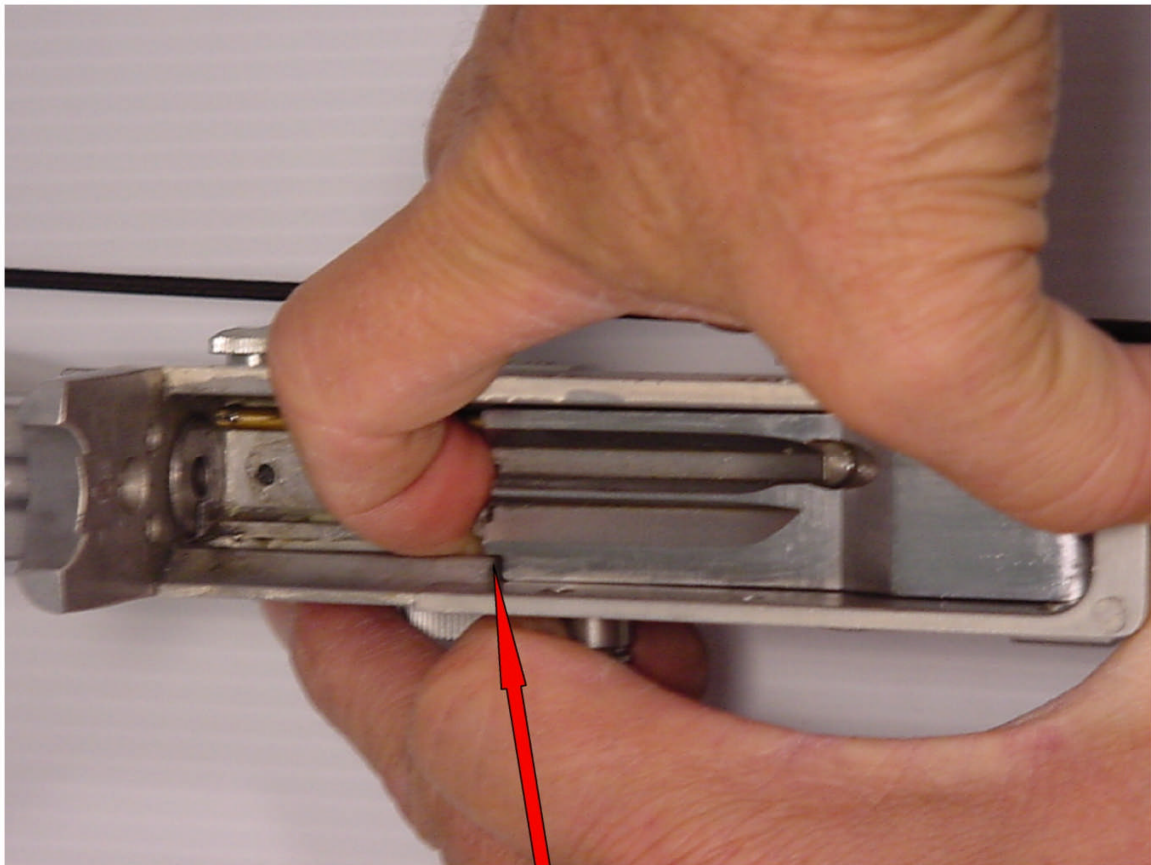
Here's what the opening in the receiver looks like.



The red arrow points to the area that is most likely causing the bolt to not seat properly. By carefully filing this area and reducing the ridge where the red arrow is pointing, it will be easier for the front of the bolt to drop freely into place.

It is best to remove a small amount of material, test fit the bolt with the bolt handle in place. As always, it is easier to remove small increments rather than remove too much material and have a sloppy fit of the bolt and handle when seated.

The following picture shows the receiver properly modified so that the bolt drops freely into place. The clearance can be seen just to the right of the arrow.



This should take care of the problem! Again, trial and error is the safest method.

Paul Koester
www.PK-Gunsmithing.com